

www.GESecurity.com

Topaz

Intelligent software for access control

Overview

Integrate access control, video surveillance, alarm monitoring, and photo ID badging with the Topaz Access Control System. Topaz is packaged with everything you need to get your security system up and running quickly and reliably. The Topaz package includes a quick start menu for Auto Configuration and Batch Add cards, which you can activate instantly with a mouse click.

Topaz uses a simple browser-style interface with full color maps, interactive icons, and point-and-click video. Packaged in complete two- and four-door starter kits and expansion kits, Topaz provides everything you need for systems with up to 128 readers. Photo ID badging and report generation with preconfigured and custom reports are all part of your Topaz package.

Integrated Video Surveillance

View video from the Topaz User interface with the click of your mouse. Either click the video icon that's tagged to event details, or view live video by clicking the video button in the alarm queue. Connect as many as 16 cameras to each of eight GE DVMRe Triplex series multiplexer/recorders on your Topaz network.

Robust Communications Options

Robust communications are built into your Topaz system. Every control panel has an onboard high-speed LAN/WAN connection while still allowing for RS-485, RS-232, and dial-up communications. You choose the best-fit options for every application.

Auto Configuration

With a click of the mouse, you can initiate the Auto Configuration feature to detect RT panels, input/output modules, and modems on the system. You can then select the configured devices or add names to individual devices before saving. Use the Device Tree to view the entire system configuration at a glance.



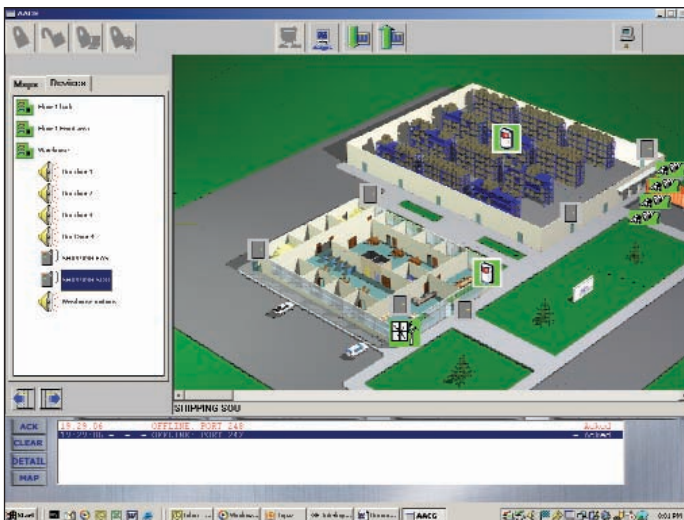
Standard Features

- **Integrated GE Security DVMRe support adds video recording to events reported to the Topaz system**
- **Packaged in complete kits for startup or expansion**
- **Browser-style interface with device tree**
- **Interactive color graphics with dynamic icons**
- **Photo ID and badging software included**
- **Instant Access**
- **Data Guard**

Continued ▶

Browser Style Interface with Interactive Color Graphics

The Topaz interface gives you a familiar browser-style environment to administer and operate the system. Dynamic alarm, reader, security area, and relay icons are displayed on color maps or other images in standard graphic file types. The icons have full drill-down capabilities to the device level. Use simple mouse clicks on the appropriate icons to acknowledge alarms or operate, arm, or disarm individual devices and doors or complete security areas.



Fully Functional Workstations

You can add up to four full workstations to the server, which also operates as a workstation. Both the server and the workstations include dynamic and fully interactive maps with onscreen video call up, PTZ control, and report and event printing. Each station can also be used as an enrollment or assessment station for the integrated photo badging system.

Badging

Create badges easily with Topaz's integrated video badging and photo ID facilities. Features include a badge design and drawing package with multilayer design tools, drag and drop capabilities, and a full editing package.

The digital photo capture tool provides image manipulation capabilities. In addition, it features multiple-frame capture so your subject can choose the best likeness from several photos. Photos may also be imported from remote video cameras and digital still cameras.

Report Generation

Report generation is extremely easy through dozens of preconfigured reports, arranged by cardholders, operators, device types, system events, alarm events, alarm history, and operator actions. The system is also equipped with a point-and-click customizable Employee Report Generator tool with multilevel filtering.

Instant Access

Topaz panels are not host-dependent. Each panel has a resident database of users and security information so it always keeps functioning. Topaz provides access operations and alarm monitoring, even during system communication loss or data downloads.

Data Guard

Topaz eliminates the potential for database corruption in field panels due to communication failures during downloads. The Data Guard feature copies data to local memory during a download, then verifies the accuracy of the data before updating the panel database, ensuring the integrity of the data.

CCTV Camera with PTZ Control

Add a video switcher to your network for a complete CCTV camera display with pan/tilt/zoom control to view an entire area. These features are available directly from any of the interactive color graphic maps.

Entry and Exit Delays by Area

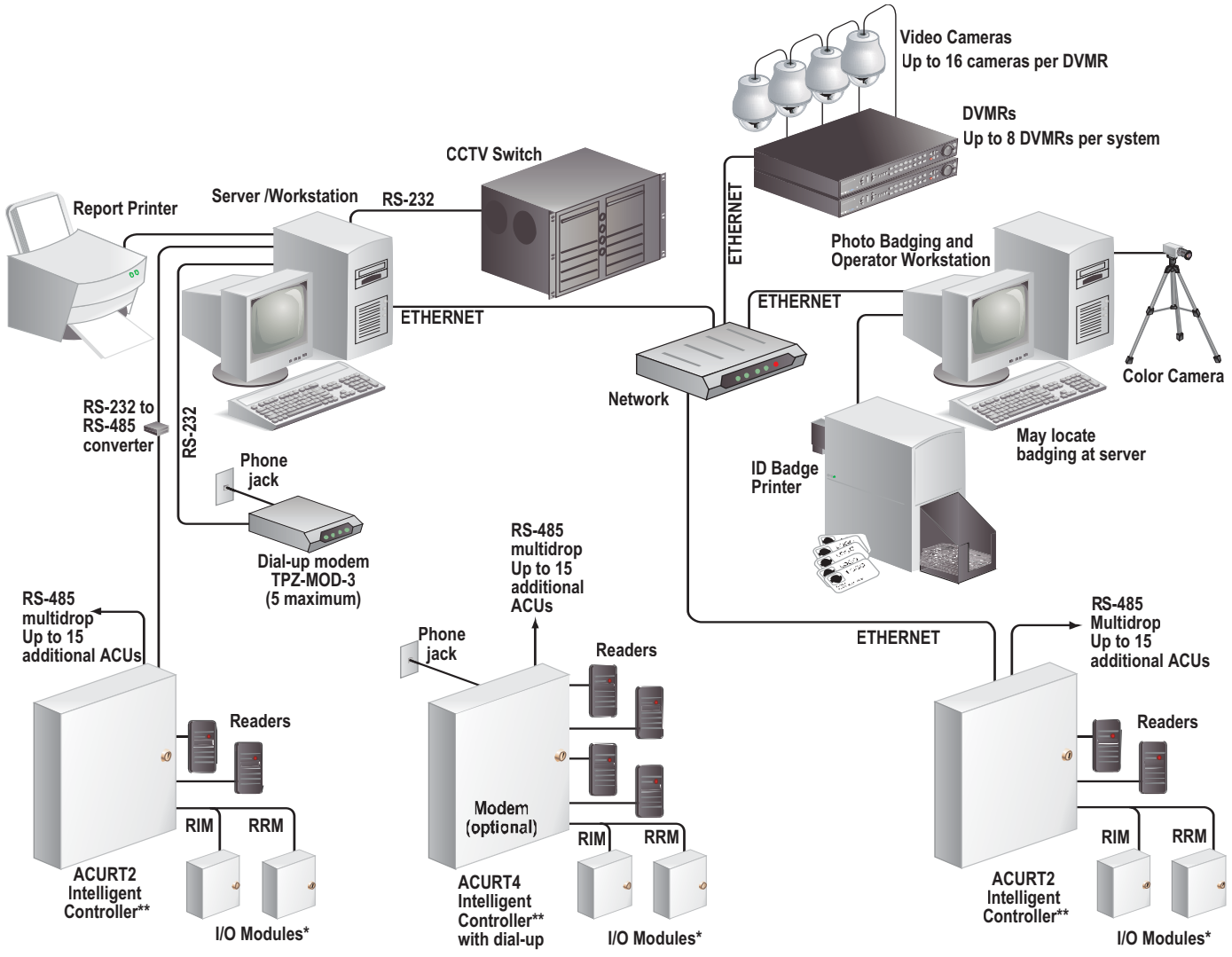
Configuring a short time delay before reporting an alarm allows ingress or egress while the system disarms or arms. Set each area with an individual delay.

ACURT2 and ACURT4 Intelligent Controllers

Topaz panels are equipped with 90 MHz cold fire processors for fast two-way communications; and they support magstripe, Wiegand, barium ferrite, barcode, proximity, biometric, and smart card technologies.

The ACURT panels are designed for installation ease with removable hinge enclosure covers, a point-to-point wiring diagram etched on the panel's overlay, and diagnostic LEDs. Panels also include flash memory for easy upgrades from the server.

System Diagram



* Up to four I/O modules on each ACURT panel.
 ** All RIM and RRM panels require external 24 VDC power (UL-UPS-24V).

Up to 16 panels can be multidropped on an RS-485 bus. Connect up to four input modules (RIM) and/or four output modules (RRM) to each panel. Each reader input on a Topaz panel has three 6-state supervised inputs: a door contact, a REX (Request to Exit), and an auxiliary input. There are two reader inputs on the ACURT2 and four on the ACURT4 panel.

through D come with Topaz software, a two- or four-reader panel (ACURT2 or ACURT4), readers, 50 proximity cards, manual, RS-232 to RS-485 converter, terminator, and a 6-foot DB-9 to DB-25 cable. See the ordering information for kit numbers.

Starter and Expansion Kits

Packaged in complete two- and four-door starter kits and expansion kits, complete Topaz systems are easy to order. Kits numbered A

Compatibility

Topaz hardware is forward-compatible with GE Security software packages such as Sapphire Pro and Diamond. Start with a package that meets your needs now, knowing that you can add flexibility in the future.

Ordering Information

Part Number	Product Description
Starter Kits	
TPZ-SYS-A	Two-reader system (two TPZ-RPP2-60 readers)
TPZ-SYS-B	Two-reader system (two TPZ-RPP2-50 mullion readers)
TPZ-SYS-C	Four-reader system (four TPZ-RPP2-60 readers)
TPZ-SYS-D	Four-reader system (four TPZ-RPP2-50 mullion readers)
Expansion Kits	
ACURT2-EX-PP	Two-reader control panel with two TPZ-RPP2-60 readers
ACURT2-EX-MU	Two-reader control panel with two TPZ-RPP2-50 (mullion) readers
ACURT4-EX-PP	Four-reader control panel with four TPZ-RPP2-60 readers
ACURT4-EX-MU	Four-reader control panel with four TPZ-RPP2-50 (mullion) readers
Software and Hardware	
TPZ-RIM-1	Remote Input Module with enclosure and lock
TPZ-RRM-1	Remote Relay Module with enclosure and lock
ACURT2	Two-reader control panel with 16MB RAM, LAN port
ACURT4	Four-reader control panel with 16MB RAM, LAN port
TPZ-SRVR-SW	Topaz server software
TPZ-WKSTA-SW	Topaz workstation software

Video Imaging and Badging

TPZ-VIB	Badging kit with capture card
TPZ-P310-C	Eltron P310 144 card/hour badge printer
TPZ-VPO-4	50 PVC overlays for TPZ-CPP2-1 (ProxCard II)
TPZ-CBP-A1	50 direct print PVC cards (no technology)
TPZ-VPR-7	Printer ribbon (200 prints, four-color)

Additional Topaz parts are listed in the price guide.

Specifications

System Capacity

- Readers: 128
- Cardholders: 10,000
- Digital video multiplexer/recorders: 8
- Cameras: 128
- Field panels: 32
- Alarm points: 2,048
- Relay outputs: 1,024
- Time schedules: 127
- Event buffer size: 250,000
- Operator password: 64
- Holidays: 32
- Serial ports: 5
- Color graphics: Yes
- Elevator control: Yes
- CCTV switching: Yes
- Photo ID badging: Yes
- Access groups: 64
- Security areas: 255
- Access groups/card: 8
- Security areas/card: 8
- Workstations (in addition to file server): 4

PC Requirements

- Intel® Pentium® 4 processor @ 1.8 GHz
- Windows XP Pro or 2000 Pro operating system
- Monitor resolution: 1024 x 768 pixels; 65,535 colors
- RAM: 768MB minimum
- Video memory: 4MB
- 3.5 in. 1.44MB floppy drive
- Disk space required: 2GB
- CD-ROM drive: 20X
- Sound card and speakers: Yes
- Serial RS-232 ports: 1 minimum
- USB port: 1 minimum for Software Sentinel
- Ethernet card: TCP/IP

Recommended PC

- Dell GX270/280



503-885-5700
 888-GE-SECURITY
 (437-3287)
 faxback 800-483-2495
 email info@gesecurity.com
www.gesecurity.com

Asia
 tel 852-2907-8108
 fax 852-2142-5063

Australia
 tel 61-3-9676-0270
 fax 61-3-9646-7005

Europe
 tel 44-113-238-1668
 fax 44-113-253-8121

Latin America
 tel 305-593-4301
 fax 305-267-4300