

# UltraView™

featuring Xposure™ technology

CONTROL

VO

DD

## UltraView solves backlight problems

Xposure by GE Security processes each pixel independently to capture clear, detailed images

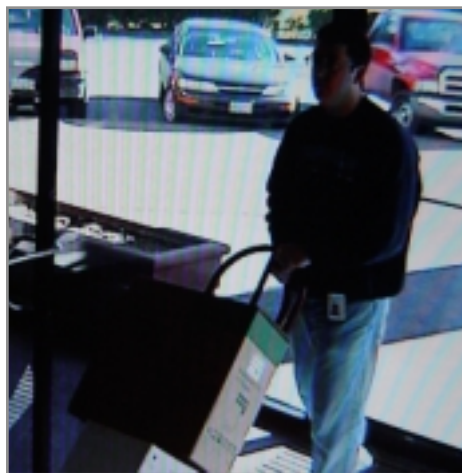
The UltraView™ wide dynamic range camera from GE Security delivers clear, detailed pictures in the most challenging lighting conditions. Featuring Xposure™ technology, the UltraView camera exposes the hundreds of thousands of pixels in an image individually. In effect, each pixel is its own camera.

Unlike conventional backlight compensation, which adjusts the exposure for the entire image, Xposure technology adjusts for challenging lighting conditions as each frame is captured. It increases exposure in darker areas and decreases exposure in brighter areas to get details where cameras without Xposure fail.

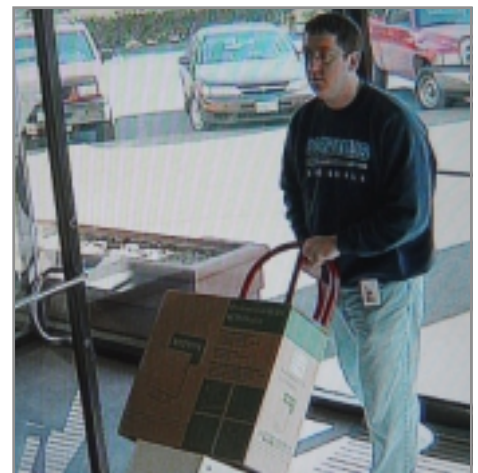
Xposure technology is advanced, so setting up UltraView is simple. Other wide dynamic range cameras require complex setup and calibration. UltraView works right out of the box; just put on a lens, plug it in and you're done. Install UltraView in an office lobby and you can clearly see people



Unlike conventional backlight compensation, UltraView's Xposure technology exposes each pixel in an image individually. That means it can adjust for different lighting conditions within the same image.



Conventional



UltraView

UltraView delivers clear, detailed images when glare, reflections and backlighting would wash out images from other surveillance cameras.

coming through the door along with cars and objects in the parking lot behind them—even if reflections or bright sunlight shine right into the camera. At an outdoor ATM, the UltraView camera compensates for sunlight and shadows to get facial features and other details critical to good security images. And in retail applications with storefront windows, UltraView prevents reflections and glare from rendering foreground objects indistinguishable.

What's more, UltraView features the highest resolution of any wide dynamic range camera, so the image details are crisp and clear, to make identification easier and more reliable.

### UltraView features

- GE Xposure technology exposes each pixel independently
- 480 horizontal lines and 460 vertical lines
- Dynamic range greater than 95dB
- Internal, line lock phase adjustable mode
- 5-button on-screen display interface
- 0.4 lux @ f1.2
- Auto-tracking white balance
- Preset modes for various environments
- Accepts C- and CS-mount lenses with manual, video and DC auto-iris control
- NTSC/PAL selectable
- Universal power supply



GE Security

# Xposure gets details in bad light

## UltraView features

### Xposure technology

Each pixel is processed independently, so you get clear, usable images with incredible detail even in challenging lighting conditions.

### High-resolution images

The UltraView color camera uses progressive scan technology to deliver more horizontal lines and dramatically clearer pictures that make identification easier.

### Auto-tracking white balance

The UltraView camera automatically adjusts to render colors accurately, even colors of backlit subjects.



### On-screen display interface

The five-button, on-screen display makes it easy to configure UltraView for your installation.

### Preset modes

UltraView includes a variety of preset modes optimized for application environments such as retail stores or ATM locations, making installation fast and easy.

### Choice of lenses

The UltraView camera accepts standard C- and CS-mount lenses with manual, video, and DC auto-iris control.



**GE Security**

#### North America

toll-free 800-469-1676  
tel 541-754-9133  
fax 541-754-7162

#### Latin America

tel 305-267-4301  
fax 305-267-4300

#### Asia

tel 852-2907-8108  
fax 852-2142-5063

#### Australia

tel 61-3-9259-4700  
fax 61-3-9259-4799

#### Europe

tel 32-2-725-11-20  
fax 32-2-721-86-13