

Control and convenience, all in one. Get the building blocks of intelligent security in the Alliance platform from GE.

GE Security
Alliance™

Intelligent Security



Intelligent security: intrusion and access control with one card

Imagine coming to work and presenting one card that unlocks doors, turns off alarms and more. The building blocks of intelligent security are seamlessly combined in the Alliance™ platform. Alliance integrates intrusion detection and access control with smart card operations and remote communication. And all its functions work together from a single platform.

Alliance is built from modular components, so you can expand coverage, modify user privileges, or increase security measures to match your changing security needs. You can even manage

your legacy equipment with Alliance, from intrusion devices to card readers.

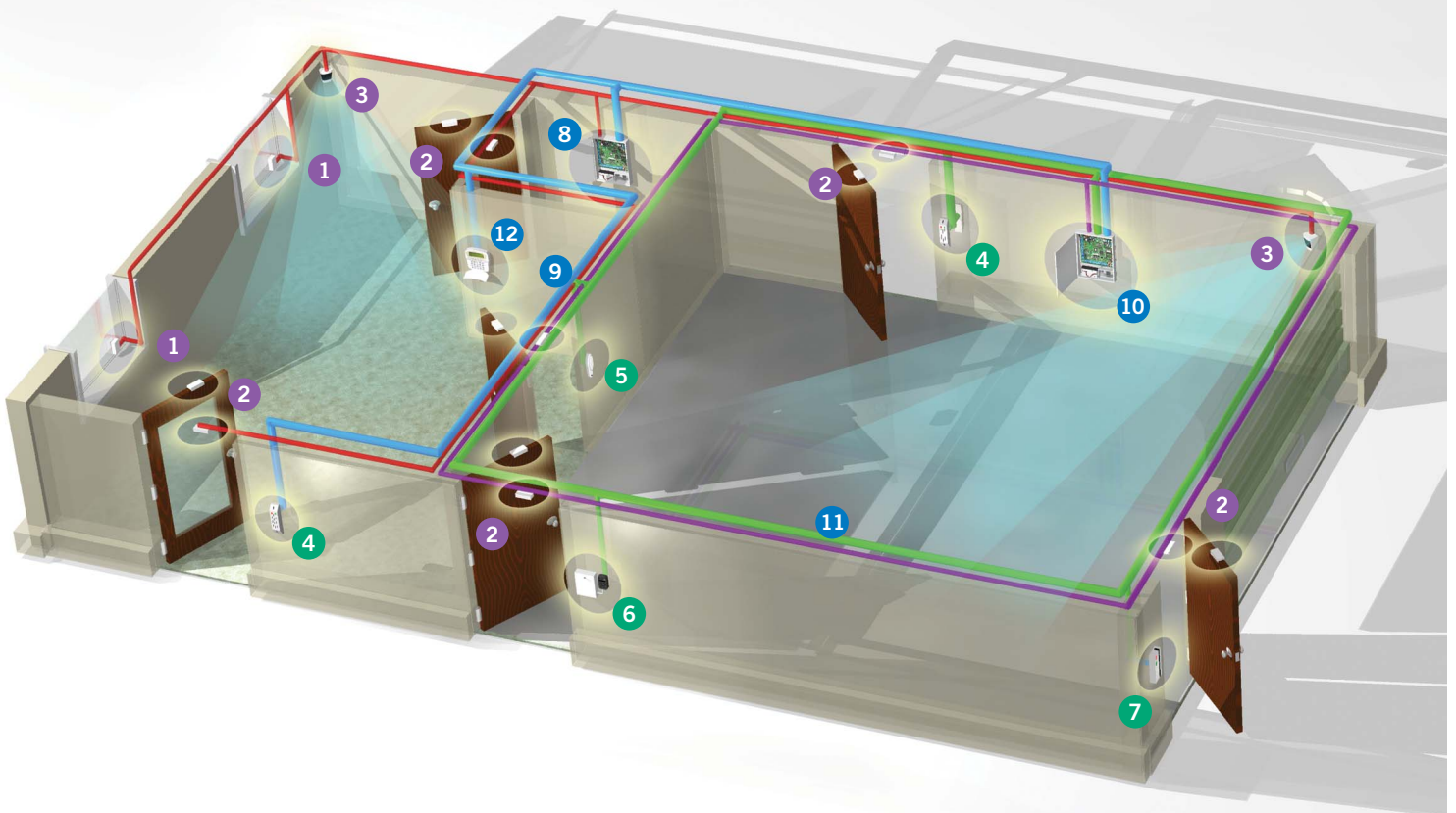
Remote communication expands your choices for monitored service. You can manage multiple sites from a central location. You can even move Alliance functions to the place where they make the most sense—for example, card administration from the reception desk, gate control from the guardhouse and system management from the facility manager's office.

Scalable, convenient, flexible. The DNA for intelligent security is in the genes of Alliance.

- 1 *glassbreak sensors*
- 2 *contact sensors*
- 3 *motion sensors*

- 4 *heavy-duty smart card readers*
- 5 *smart card reader*
- 6 *Wiegand interface and reader*
- 7 *magstripe reader*

- 8 *system control panel*
- 9 *system bus*
- 10 *intelligent 4-door controller*
- 11 *local bus*
- 12 *keypad*



1

Convenience. Use one smart card to do it all: unlock doors, disarm alarms, even rearm an entire building. Users don't have to remember to set or turn off alarms ever again. Managers enjoy unprecedented convenience and control, including:

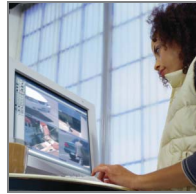


- Customized reports providing exactly what you need to know, and how often, for usage reports, exception reports and more
- Remote access, letting you check in even from home
- A graphical interface showing where events are occurring

Five reasons to choose Alliance

2

Compatibility. Alliance unites your existing intrusion and access devices with smart card operations and remote communications, so you don't have to replace your existing security equipment. You don't have to buy a dedicated server, either, because Alliance works with your existing PC (Windows 2000, XP or NT4). You can keep track of activity from an on-site work-



station, have it monitored through a central station, or check in through a connection from your own home. And Alliance works with your legacy hardware, too, even interfacing with existing Wiegand-based card reader systems.

3

Flexibility. You can mix and match Alliance's modular components to fit your needs. You can customize your Alliance platform with standard settings or define your own user privileges and events. Or you can program (and reprogram) your own user access cards. You can even set



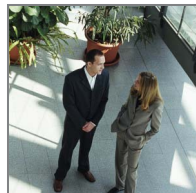
up Alliance smart cards with user accounts for commodities, such as:

- Time in a fitness center or parking garage
- Meal tickets or vending machine items
- Copies from a photocopier

And Alliance's modular components let you adjust security measures when your needs change.

4

Reliability. False alarms are annoying, expensive and time-consuming. Alliance gives you confidence in any reported events—you'll know that an alarm is really an alarm. With Alliance you can:



- Eliminate commonly occurring false alarms—Alliance's integrated securities will never let a user open a door when an area is armed.

- Use secondary alarm verification to delay an alarm report, perhaps by three seconds, until additional devices are triggered.

- Run Alliance's remote diagnostics to uncover trouble spots, such as an off-line sensor, before a problem actually occurs.

5

Peace of mind. Alliance brings you peace of mind by meeting varying needs throughout your facility with exactly the level of security that's required. Your building is armed when it needs to be, and you don't worry about false alarms.



System administration and operations are located where they make the most sense for your business. Users are equipped with one smart card, and management is supplied with whatever system reporting is needed. Convenience, flexibility and more are yours when you put Alliance intelligent security to work.

Convenient, controlled security throughout your facilities

Say goodbye to the days of awkward, interfaced systems with limited capabilities. Configure Alliance to address your specific security concerns while keeping track of traffic as well as equipment usage. Security levels are defined by area, door, user and time zone.

An Alliance system supports up to 16 areas, 256 zone inputs, 255 freely programmable outputs and 64 doors with on-site or remote management. And with its modular components, you can expand the system size or capabilities, or simply create more convenient connection points on the data bus.



Intrusion protection

Prevent security breaches before they happen: theft, vandalism, even records privacy. Alliance lets you customize a combination of intrusion detection and access control features to suit each area's needs.

With Alliance, you can:

- Use one card for access and intrusion. Present the same card three times to rearm the entire building.
- Control who goes where, when, with flexible user privileges. Restrict certain users to specific doors and time periods—for example, couriers could access the lobby for 15-minute periods during evening hours.
- Manage your facility from remote locations.
- Issue your own photo ID cards and assign privileges by groups or individuals.
- Choose any path for alarm reporting, such as on-site during the day and monitored at night. Print activity reports as needed.
- Virtually eliminate false alarms through integrated intrusion and access control functions. Alliance prevents users from entering secure areas until alarms are disarmed.



Alliance system control panel

The heart of the Alliance system, the AL-4017 control panel, integrates up to 256 security system inputs and up to 255 programmable outputs for up to 16 areas. It communicates with readers, keypads and system expansion cards via an RS-485 data bus.



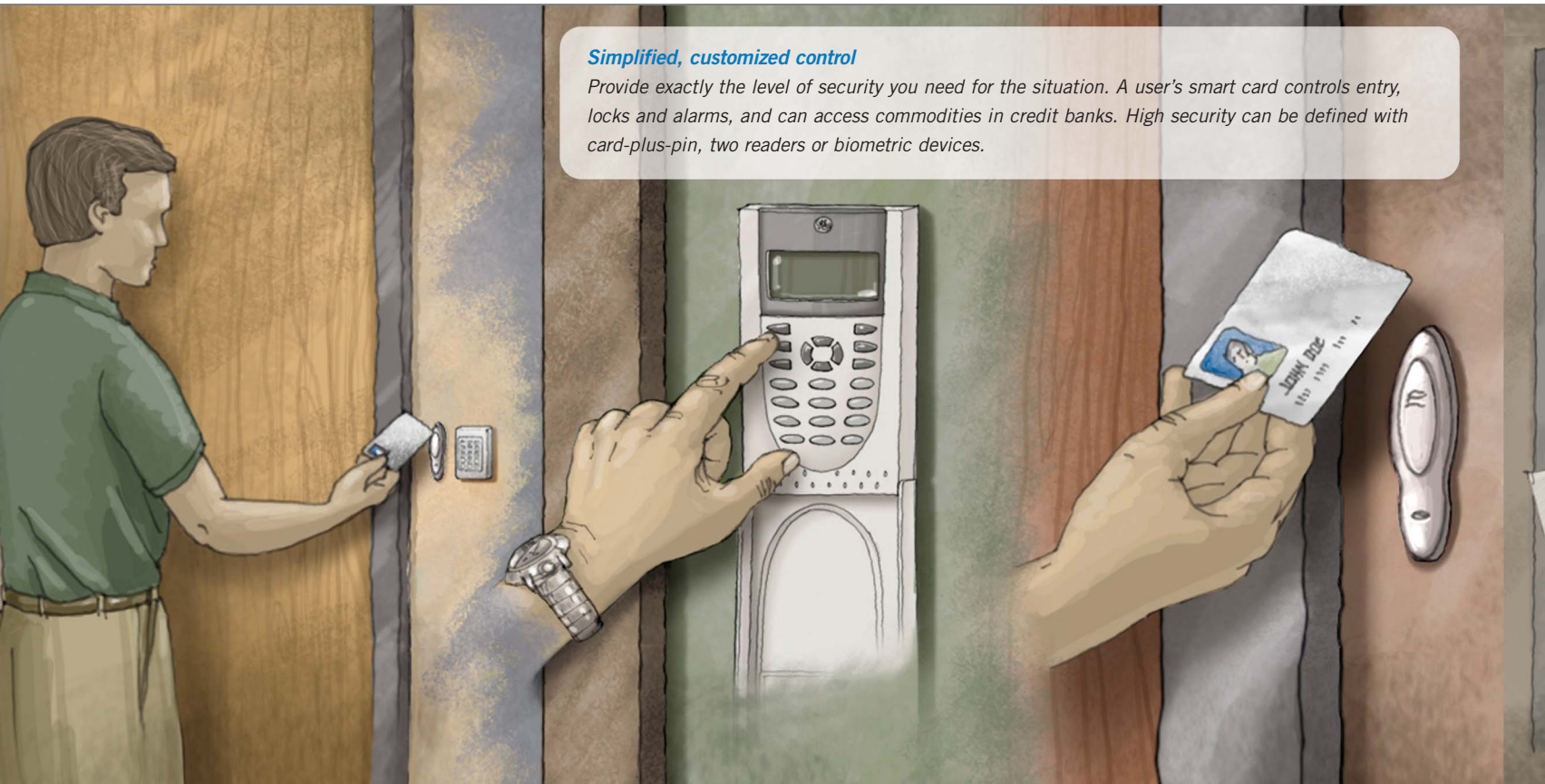
Keypad

You can use an Alliance keypad as your main system interface. It can navigate system programming and perform simple data entry and other control functions. An LCD displays status messages, programming menus and additional system options. Several models combine the keypad with a built-in proximity card reader.



PrecisionLine™ motion sensor

PrecisionLine™ motion sensors are ideal intrusion sensors for use with Alliance. Combining range-controlled radar and PIR technology, the PrecisionLine sensor delivers precise coverage with unsurpassed immunity from false alarms.



Simplified, customized control

Provide exactly the level of security you need for the situation. A user's smart card controls entry, locks and alarms, and can access commodities in credit banks. High security can be defined with card-plus-pin, two readers or biometric devices.



Intelligent 4-door controller

The AL-1255 data gathering panel (DGP) supports up to four readers and four inputs per door. You can accept default settings for door contact, door-open-too-long (DOTL) and request-to-exit (RTE) inputs. Or program your own inputs for specific functions.



Wiegand reader interface

The AL-1170 module allows you to use Alliance with your existing equipment, including Wiegand or magstripe readers. Alliance works with all Wiegand card formats. Alliance prevents users from entering secure areas until the alarm system has been disarmed.



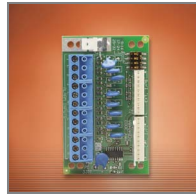
Smart card reader

Alliance smart card readers can be used indoors and outdoors. They feature 10-foot-long cables for easy installation, and they can be run from the system data bus or from an AL-1255 4-door controller. The AL-1191 model comes in six colors to match your decor.



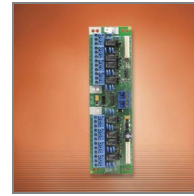
Data gathering panels

Alliance data gathering panels (DGPs) add inputs and outputs to your system, either at the control panel or in distant locations. The AL-1205 DGP features eight onboard inputs and an integral power supply and siren driver.



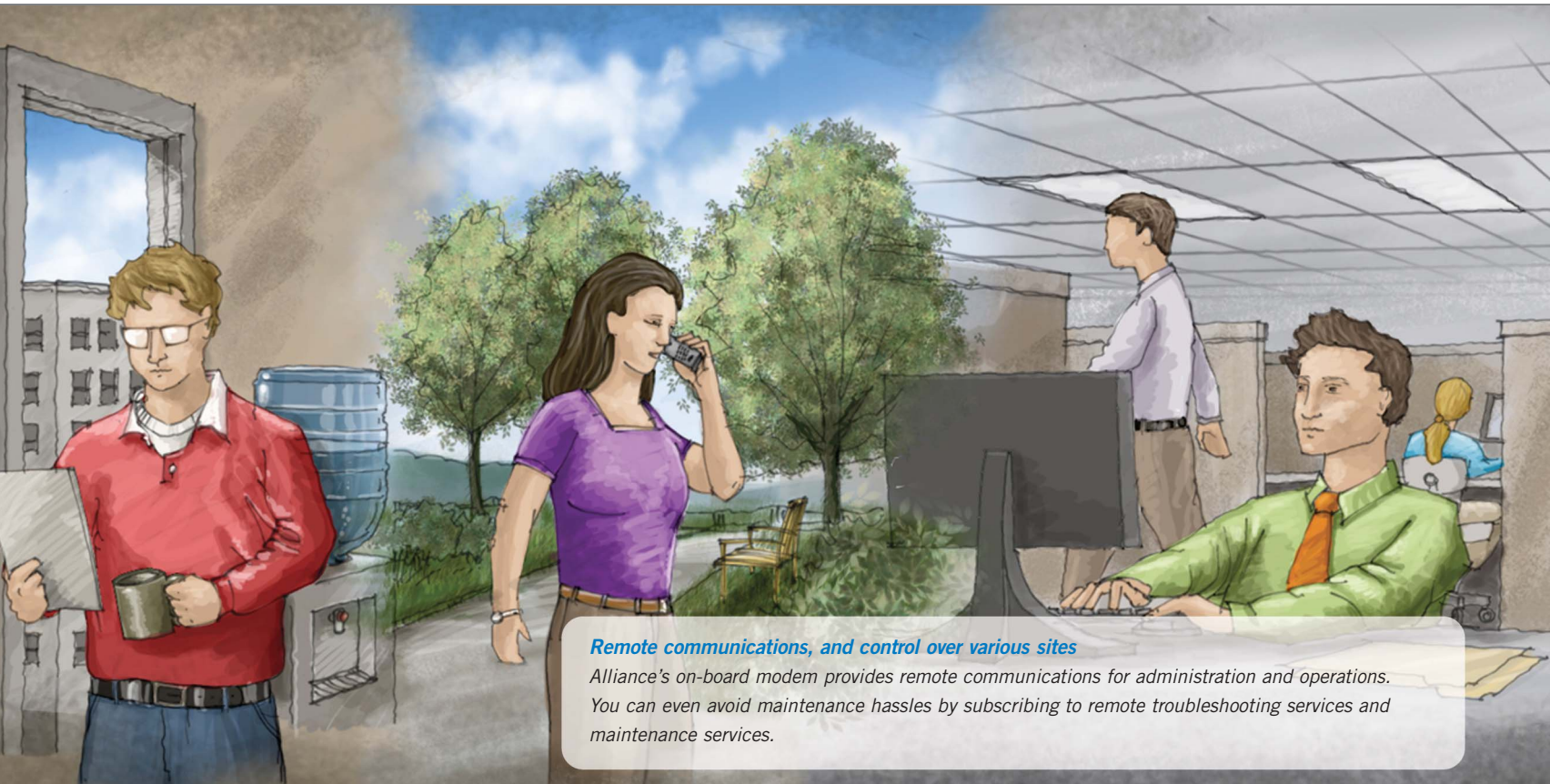
Zone input expanders

Add inputs to your Alliance control panel or to any Alliance DGP—up to 256 inputs on a fully expanded system. Each AL-1206 card adds eight zone inputs to your Alliance system.



Relay module

You can add Alliance relay modules to a control panel or DGP for up to 255 fully programmable outputs on your system. The AL-1813 features eight form-C relay outputs.



Remote communications, and control over various sites

Alliance's on-board modem provides remote communications for administration and operations. You can even avoid maintenance hassles by subscribing to remote troubleshooting services and maintenance services.



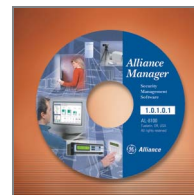
Smart cards and tags

Choose from Alliance's proximity cards and tags that are embedded with a smart chip inside. Alliance smart card readers record data to cards as they read them. There's even a magstripe card option available to work with your legacy equipment.



Smart card programmer

The AL-1623 lets you program and reprogram smart cards for your users. Smart cards are highly secure, each with a unique security code. Once you've created the code for your installation, the card memory can't be read—or even recognized—by any other reader or programmer/software communication.



Alliance Manager software

Windows-compatible Alliance Manager software helps you set up and manage your system. You can add and delete users, modify their privileges, program smart cards and produce photo ID badges. You can also create custom reports from real-time events and history logs.

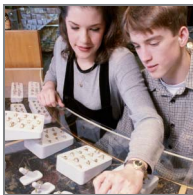
Security for all kinds of organizations



Health care. Alliance helps you address patient privacy concerns by controlling and tracking access to confidential records. You can customize access privileges to determine who has access to records, and when. For example, you can give doctors 24-hour access while limiting office staff access to normal business hours. Alliance can also tell you both the who and

when if anybody enters a controlled area, plus when that person leaves.

Alliance intrusion and access control functions help you meet the physical security requirements of the Health Insurance Portability and Accountability Act (HIPAA) regarding patient medical records.



Retail. Install Alliance in a shopping center, and you can create secure entry and intrusion points for individual stores. This allows storekeepers to enter and disarm their own areas while other stores and the mall as a whole remain armed and locked during off hours. What's more,

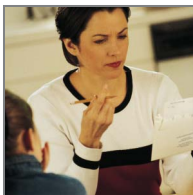
Alliance expansion modules make it easy to connect inputs and relays away from the main control panel.

For retailers with high-value merchandise such as jewelry, you can configure Alliance for a high-security, card-plus-pin combination.



Education. Alliance's flexibility and control are exactly what schools need to deal with high security requirements, varying schedules and frequent public access. Administrators can simply program Alliance to open and close different areas at different times, track people going in and out, and monitor any unexpected activity.

Alliance is ideal for campus environments, too. Students need only one card to enter multiple areas. You can control access by day and time, as well as set privileges to expire automatically at the end of the term. You can also use Alliance smart cards for user debit accounts. They can be used to purchase unit items such as parking time, pre-priced meal tickets or photocopies.



Finance. Financial institutions throughout Europe trust Alliance, with more than 600 installations since 1999. For high-security areas, you can configure Alliance to require a card-plus-pin combination or require that two cards be presented at once for access.

Alliance's vault feature rearms areas automatically at a certain time every day, or within a time period, such as five minutes after the last user exits the area. Doors can lock down (or all unlock) if a security breach is detected. You can track the arrival and exit of people within areas to provide an audit trail if needed.

Flexible, powerful and trouble-free

Flexibility is built into the Alliance platform. At the design stage, you can mix and match its modular components to create security that fits your business. When it's time to configure your system, you have a full range of powerful intrusion and intelligent access control options, including any event, action and alarm you want to define. And once Alliance is up and running, you choose exactly how to monitor and maintain your system.

Alliance provides one point of management for your in-house security staff. You can also choose to have your dealer or another third-party vendor provide round-the-clock monitoring and alarm response from a central station, or you can create your own reporting paths, such as on-site reporting during the day and monitoring at night. When an alarm is tripped, you can query the system remotely to verify and check the status of other intrusion devices, reducing false alarms.

Alliance helps you avoid maintenance hassles, too. Your security dealer can run remote diagnostics periodically to ensure everything is working properly and to spot trouble before it happens. Those same remote communications let your dealer upload and download information for troubleshooting. And Alliance keeps your security up and running—there's no down time when testing. There's only one system to purchase, install, maintain and upgrade over time—you don't have to keep track of multiple vendors and warranties.

Choose Alliance with complete confidence. It's FCC approved, and it's UL certified for UL294, UL365, UL609, UL1610 and UL1635 operations.

Flexible, scalable, compatible. Intelligent security is in the genes. It's Alliance.





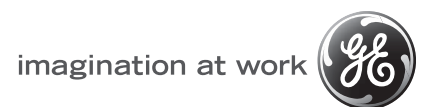
About GE Security

GE Security is a global technology leader dedicated to helping customers protect their people, their property, their customers and their bottom line. We've been designing and manufacturing access control, intrusion and fire detection, video surveillance, explosives and narcotics detection, key control, and fiber-optic transmission systems for more than 25 years. Customers like you help us identify needs for new technology and products, and we keep creating innovative solutions for you. And versatile, flexible products like Alliance keep on meeting your needs even if those needs change. GE Security is a wholly

owned subsidiary of GE. Like our parent company, we maintain a sharp focus on product and service innovation. When we create new technologies, or when we recognize the value of technologies created elsewhere, we begin building them into our products. When you choose GE, you can count on having the latest technology to create a secure environment.

For additional information:

Explore www.GESecurity.com/alliance or call 800-547-2556.



U.S.
tel 800-547-2556
fax 503-691-7566

Asia
tel 852-2907-8108
fax 852-2142-5063

Australia
tel 61-3-9259-4700
fax 61-3-9259-4799

Europe
tel 32-2-725-11-20
fax 32-3-721-86-13

Latin America
tel 305-593-4301
fax 305-593-4300