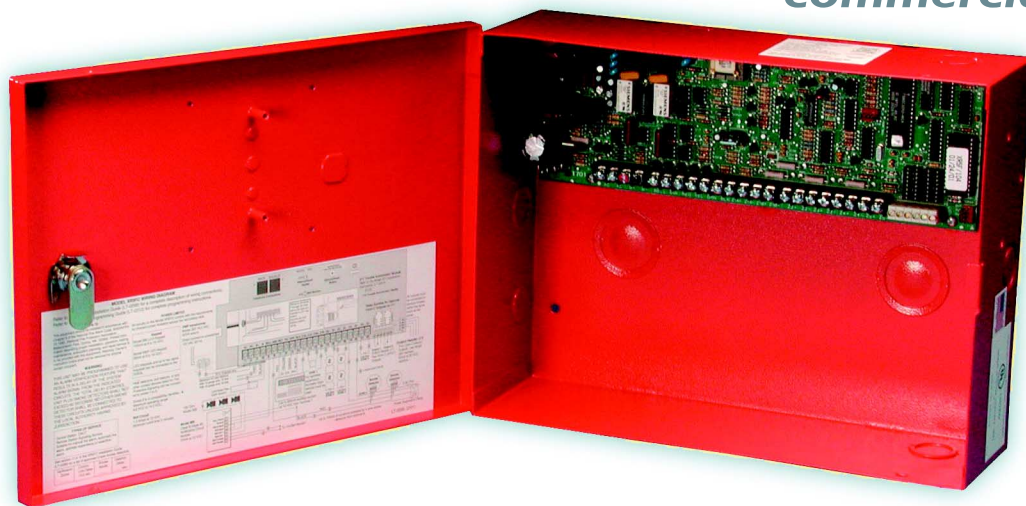




NYC
MEA



*Economical, reliable
performance for small
commercial applications*



XR5 commercial fire and slave communicators from DMP are perfect for small commercial installations that require reliable, cost-effective monitoring.

- Built-in 2-line dialer
- 500mA auxiliary power
- One Class A (Style D) zone for sprinkler supervision
- Four Class B (Style A) smoke-detector zones
- 12 or 24 VDC input

Rely on DMP to increase the value of your next fire alarm installation. High-quality DMP panels and network monitoring technologies have led the industry for decades and significantly reduce the cost of monitoring communications.

XR5 — 5 ZONE COMMERCIAL FIRE PANEL

SYSTEM FEATURES

- One Class A (Style D) waterflow zone
- Four Class B (Style A) 2-wire smoke detector zones
- 100mA 12 VDC switched 4-wire smoke power (XR5FC)
- Two Form C relay outputs optional
- Four open collector outputs for annunciation
- Built-in dual phone line module with line monitoring
- Built-in bell circuit trouble monitor, connects to Model 865 or 866 Notification Circuit Modules
- 1.5 Amp alarm bell output (XR5FC)
- 500mA auxiliary output
- Operates on 16 VAC or 24 VDC primary power and 12 VDC secondary power
- 4-wire keypad and annunciator circuit
- 16 event history can be viewed from any alpha keypad
- DMP Serial 3, Contact ID, or 4-2 communication formats
- Compatible with the iCOMs₂ for network/Internet reporting
- Programmable reporting to one or two central stations
- Remote upload/download with Remote Link™
- Built-in plain English programming from any keypad
- Individual zone programming for fire, fire verification, retard delay, cross-zoning, and fire supervisory
- Compatible with a variety of LED and LCD keypads
- Fire Drill feature for practice evacuations
- Swinger bypass option on all zones
- Inherent power limited circuits
- Automatic recall test reporting
- One-man Walk Test
- Automatic standby battery test



COMMUNICATION

Each XR5 panel contains a built-in dual phone line module with line supervision that can communicate to one or two remote receivers using DMP Serial 3 digital dialer, Contact ID (CID), or 4-2 formats. You can also selectively enable alarm, supervisory/trouble, backup, and recall test reporting to either of the two receivers.

NETWORK MONITORING™

An iCOM_{SL} Network Alarm Communicator connects to the XR5 to provide Internet/LAN/WAN communications to the panel. When used in this manner or as a slave or stand-alone network communicator, the iCOM_{SL} reduces or eliminates costly telephone lines and communicates to the central station via high-speed network connections.

AC OR DC POWER INPUT

XR5 panels operate on either 16 VAC from a wire-in transformer or 24 VDC from a main Fire Alarm Control Panel (FACP), allowing panels to be used as stand alone communicators or FACPs. When powered from the 24 VDC input of a larger FACP, the panels can operate as slave communicators with 12 VDC auxiliary output capability.

ONE-MAN WALK TEST

Conduct one-man tests of the system and all connected devices using the Walk Test feature. Simply enter an access code into the keypad and XR5 panels automatically enter test mode. Each time a zone trips during the test, the bell rings for two seconds and a Sensor Reset is automatically performed to reset latched detectors. When the test is completed, the results display at the keypad and can be sent to the central station.

POWERFUL FALSE ALARM REDUCTION FEATURES

The built-in false alarm reduction features include cross zoning, fire verification, fire retard, and CleanMe™ reporting.

Cross zoning allows multiple zones to be cross zoned and report alarms only when two or more zones fault within a programmable time of 4 to 250 seconds. Should just one zone trip, only a zone fault report is sent to the central station.

Fire verification provides a 120-second window during which a smoke detector can trip, be automatically reset, and then must trip a second time before an alarm is indicated. A single trip on the zone sends only a zone fault report to the central station.

Fire retard allows a programmable time of up to 250 seconds for waterflow detection. This eliminates the need for additional mechanical delays at the flowswitch.

ANNUNCIATOR OUTPUTS

Four open collector outputs can be used for a variety of remote control and annunciation applications. Each output is rated for 50mA maximum. Add the Model 860 Relay Output module to provide four form C relay contacts. Each Model 305 relay is rated at 42mA and the module can easily mounts inside the XR5 enclosure.

TROUBLE ANNUNCIATOR MODULE

For slave communicator applications, the XR5SL provides an enclosure door-mounted Model 377 Trouble Annunciator Module. The Model 377 offers Trouble and System OK LEDs with audible alert and a Silence button for acknowledging trouble conditions.

BUILT-IN PROGRAMMER

An internal English text Programmer enables technicians to easily program and test the panel from any keypad. A lockout code restricts access to only authorized persons.

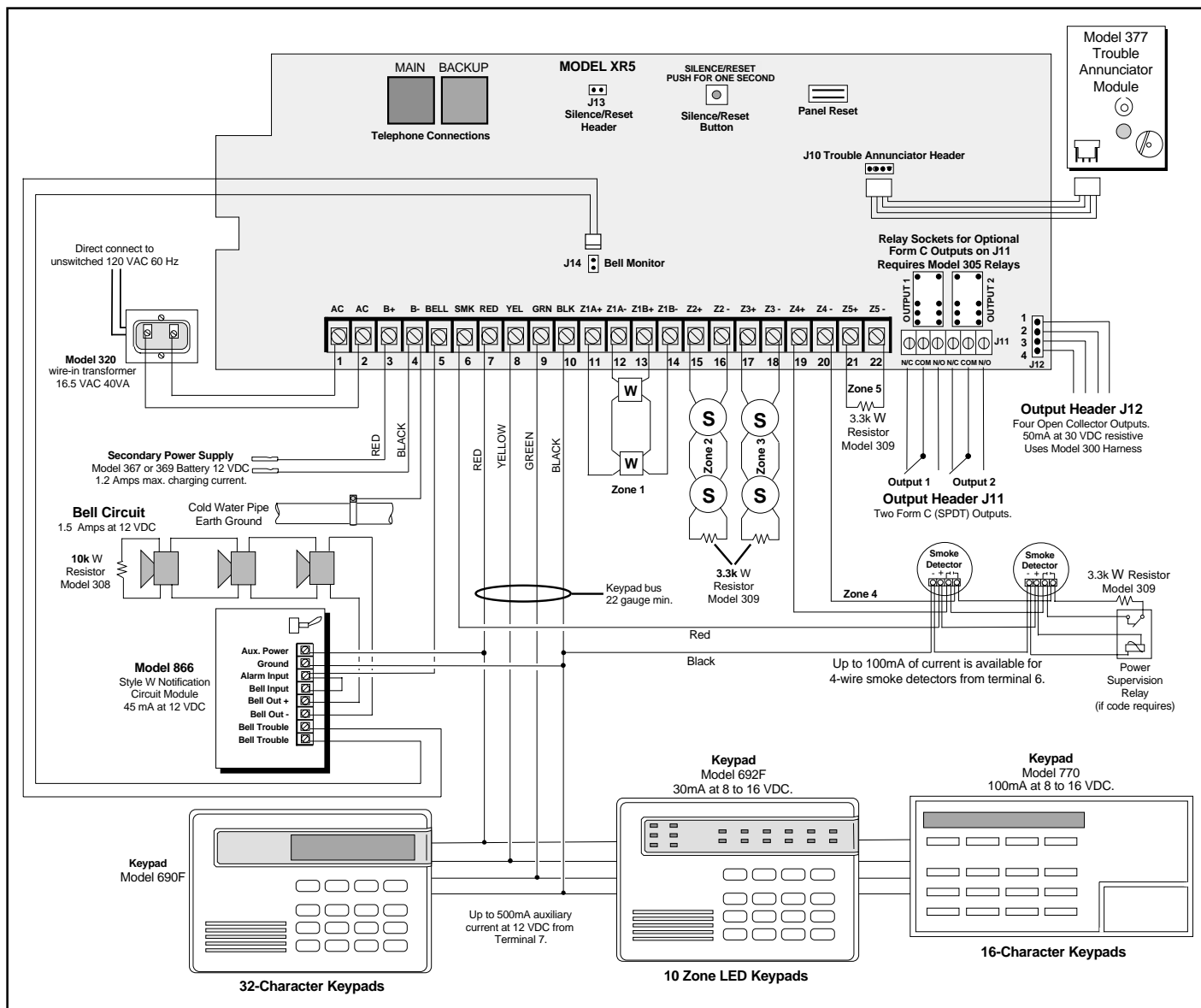
REMOTE PROGRAMMING

Remotely program XR5 panels using Remote Link™ programming software from DMP. You can upload panel programming, make the necessary programming changes, and then download the revised programming into the panel.

Expand Remote Link/System Link functionality with Advance Reporting, Alarm Monitoring, or Command Center packages.

VARIETY OF KEYPAD STYLES

For system annunciation, select from several keypad styles to meet a variety of fire system requirements. The Model 692F LED keypad provides individual alarm and trouble LEDs as well as power, system trouble, and silenced LEDs along with a full function, backlit keyboard. You can also choose from 770F or 690F series alphanumeric keypads. Both LED and alphanumeric keypads meet all requirements for local system operation.



XR5FC System Configuration Diagram

FIRE COMMAND KEYPADS

- 690F Fire Command™ 32-character LCD
- 692F Fire Command™ Keypad
- 790F 4-zone LCD Fire Command
- ePAD Network Keypad

AUXILIARY MODULES

- 377 Trouble Annunciator Module (included with XR5SL)
- 860 Relay Module
- 865 Style Y/Z Notification Circuit Module
- 866 Style W Notification Circuit Module
- 867 LX-Bus Notification Circuit Module
- iCOM^{SL} Network Alarm Communicator
- 893/A Dual Phone Line Module

POWER SUPPLIES

- 502-12 Provides 2 Amps @ 12 VDC
- 504-24 Provides 4 Amps @ 24 VDC
- 505-12 Provides 5 Amps @ 12 VDC
- 508 8 Amps @ 12 or 24 VDC

COMPUTER SOFTWARE

- Remote Link™ Programming Software
- System Link™ End-User Software
- Alarm Monitoring™ Module
- Command Center™ Visual Command and Control Module

DETECTORS

- SLR-835B Photoelectric Smoke
- 521B/BXT Addressable Smoke, CleanMe™
- 600 Series Heat Detectors
- 3045 Sentrol Panic Switch
- 5515G Sentrol Moisture Sensor (requires 5501)
- 5501 Sentrol Moisture Processor

NOTIFICATION APPLIANCES

- 802 Multitone Notification Appliance
- 803 Horn Appliance
- 806 Motor Bell
- 821 Sync/Non-Sync Strobe
- 822 Sync/Non-Sync Strobe Plate
- 823 Horn/Strobe Appliance
- 831 Single Sync Module
- 832 Dual Sync Module
- 850D Dual Action Fire Alarm Pull Station

ACCESSORIES

- 300 Plug-in Harness
- 305 Plug-in Relay Output
- 306 Tamper Harness
- 318 Dual Battery Harness
- 320 40 VA Wire-in Transformer
- 321 40 VA Plug-in Transformer
- 322 56 VA Wire-in Transformer
- 349 Medium Enclosure
- 350 Large Enclosure - room for four batteries
- 350A Attack Resistant Enclosure
- 367 12 VDC 7.7 Ah battery
- 370RJ Lightning Suppressor with Two RJ Jacks
- 430 Output Harness

SPECIFICATIONS

- Primary Power 16.5 VAC 40VA transformer (Model 320)
- Secondary Power 12 VDC 7.7 Ah battery (Model 367)
- Outputs
 - Auxiliary 500mA @ 12 VDC
 - Annunciator 50mA each (switched ground)
- XR5FC Outputs
 - Alarm 1.5 Amps @ 12 VDC
 - Smoke 100mA @ 12 VDC
- Enclosure Red (Models 340FC or 340SL)
- Dimensions 12.5" x 9.5" x 3.75"
- Material 20-gauge cold-rolled steel

LISTINGS AND APPROVALS

- Refer to the XR5 Installation Guide (LT-0229), XR5 Programming Guide (LT-0312) and specific compliance listings for installation and programming requirements necessary to meet a particular approval.
- Underwriters Laboratories (UL) Listed
 - California State Fire Marshal (CSFM)
 - New York City (MEA)
 - FCC Part 15
 - FCC Part 68
- For additional information, access www.dmp.com and select Compliance.



800-641-4282

www.dmp.com

Made in the USA

INTRUSION • FIRE • ACCESS • NETWORKS

2500 North Partnership Boulevard

Springfield, Missouri 65803-8877